

Hydraulic accelerator, 2-way metal relay-valve

The 28-200 is a 2-way, hydraulically operated, diaphragm actuated normally open relay-valve which is designed to meet the requirements of hydraulic valves control functions, particularly when fast reaction is required. The body contains one seat, a fully supported frictionless diaphragm and a guided shaft. When pressure command is applied above the diaphragm a disc forms a drop tight seal with the valve seat.



Features

- A 2-way relay-valve
- Extremely large water passages enable fast response
- Tough and durable construction
- High-grade materials
- Internal trim designed for easy disassembly and maintenance, by removing the bonnet and pulling the trim
- Can be used with any hydraulic control valve
- Simple design

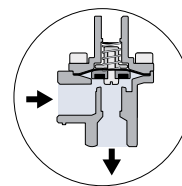
Typical applications

- Hydraulic Remote Control Valve - RC
- On/Off control for 2-way regulating functions

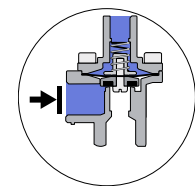
Technical data

General		
Pressure rating	25 bar / 360 psi	
Pressure adjustment range	0.3 - 25 bar / 4 - 360 psi	
Command / line pressures ratio	1:3	
Fluid temperature	80°C max. / 175°F max.	
Weight	0.43 kg / 0.95 lbs	
Materials	Standard	Optional*
Body and bonnet	Brass	SST
Elastomers	NBR	
Internal parts	SST	
Spring	SST	
Dimensions		
H (Height) max.	76 mm / 3"	
W (Width)	56 mm / 2.20"	
Port Connections		
1	NPT 1/4"	
2, 3	NPT 1/2"	

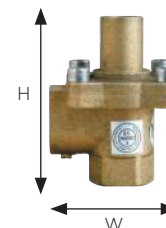
* other materials available upon demand



De-pressurized command



Pressurized command



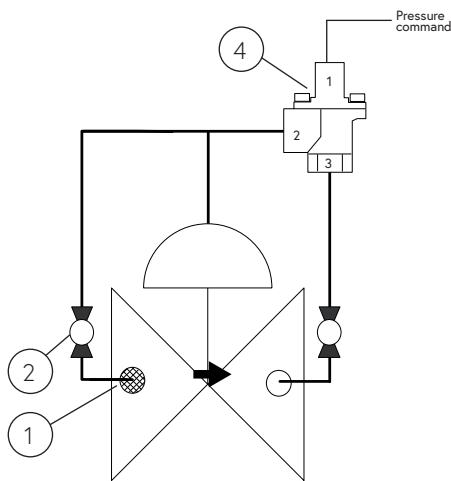
Installation

Main components

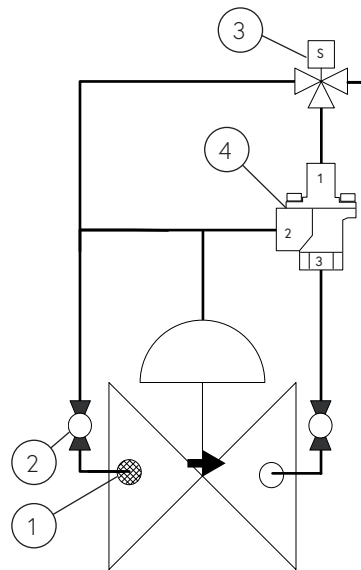
#	Description
1	Self flushing filter
2	Isolation ball valve
3	Solenoid-valve
4	28-200 Relay valve

Connections

Port	Altitude
1	Command
2	Inlet
3	Outlet



Hydraulic Remote Control Valve - RC



On/Off control for 2-way Regulating Functions

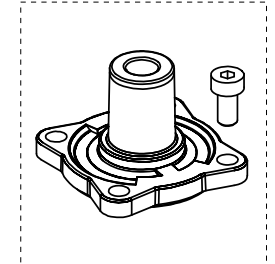
Sample drawing. Consult Dorot for the assembly design to fit your needs.

Catalogue numbers

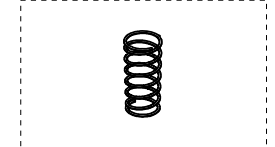
Description	Catalogue number
Bonnet kit	661022820000000
Spring	0022028000
Internal parts kit	661202820000000
Body kit	661012820000000

Spare parts

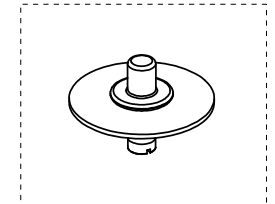
Bonnet kit



Spring



Internal parts kit



Body kit

